

ELLEN MALMGARD

Object
Picture
Installation



The subject matter presented in Ellen Malmgards work is an exploration of thoughts which weave together both behavioral and biological patterns.

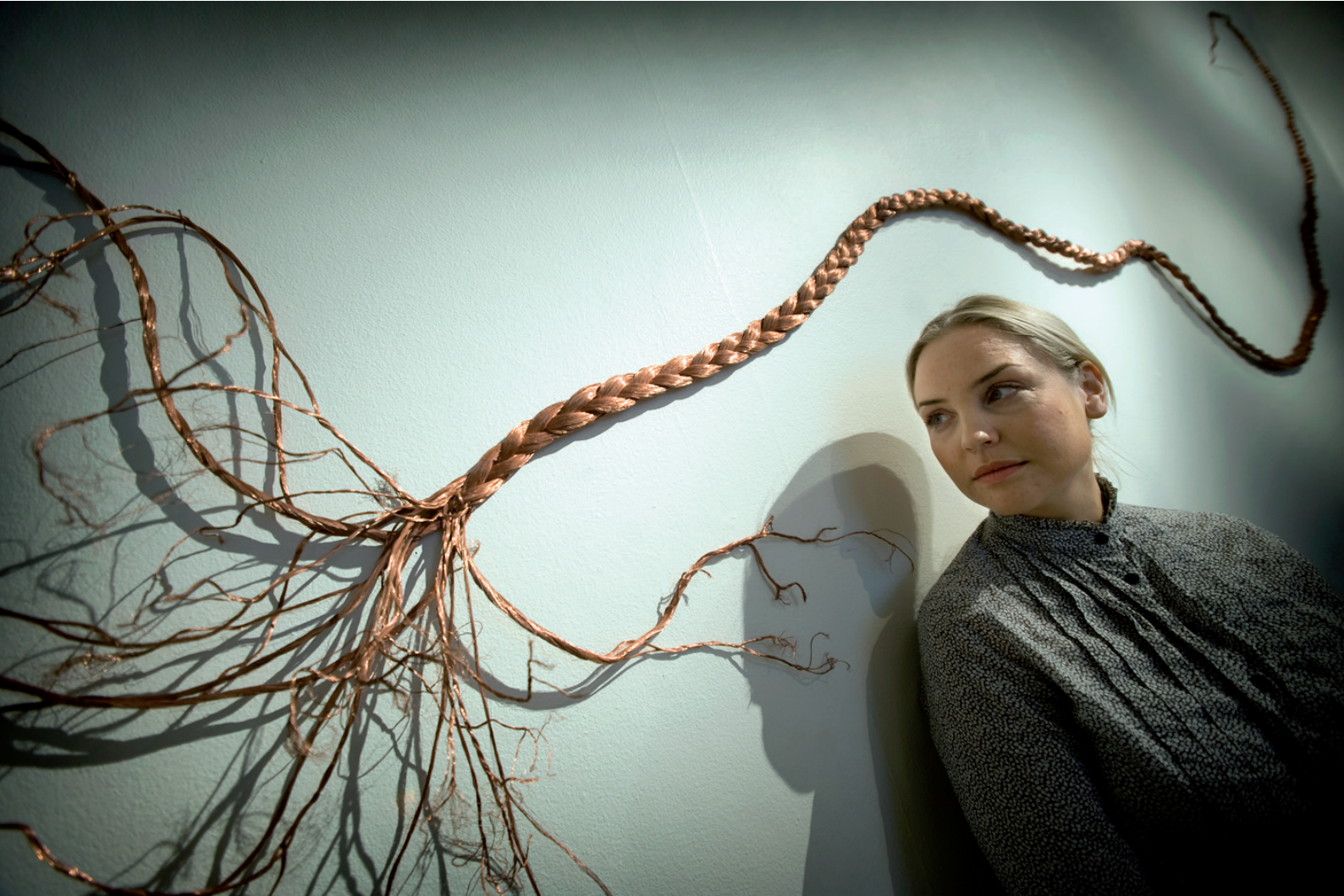
The works attempt to decipher the transformations in nature's cogitative structure and composition, presenting a visual reflection of an internal psychological landscape.

To enhance the feeling of stepping into a world of visualized emotions, soundscapes and light installations figure in her exhibitions. Most recently music from Dou Harpverk (IS), created for Ellen Malmgard.

ELLEN MALMGARD

THE GLASS DIALOGUE

National Glass Museum, Sweden
9/10 2010 - 30/1 2011



Recurring patterns found in nature, as in treebranches or veins, serve as a mandala that connects the external landscape with the internal.

Exploring classical sculptural themes such as gravity and mass, Ellen Malmgard mixes materials and techniques for the investigation of material properties as well as symbolic values.



ELLEN MALMGARD

WHERE WE RESIDE

Eksjö Museum, Sweden
17/6 - 29/8 2010



During the summer months the exhibition space in Eksjö Museum has the presence of nature. Fragmented memories are crystallized into images of mythical places, where sounds of the forest and the light from the skies guide the path to new discoveries.

Exploring the possibilities of a collective consciousness reflected in nature, in which the environment we inhabit creates a synergy with our inner landscape.

Like the turn of the seasons, our moods are in constant change. Lush vegetation make way to bare branches, chilly winds carry particles laid dormant in the snow.



ELLEN MALMGARD

"The first to catch ones eye in the room are the five cocoons, Secrets, which are hanging from the ceiling. One can easily imagine that the egg like beings were placed there by some giant insect, preferably in the style of Louise Bourgeois' giant spiders."

"Malmgard plays skillfully with visual stimuli in relation to tactile expectations in her portrayal."

-Thomas Lissing, critic for SMP



"She represents the young generation of artists with a new way of working with traditional materials. Using innovative techniques, she creates unique items interesting both in their visual expressions and concepts."

-Thord Thordeman, curator for Galerie Rosemarie



ELLEN MALMGARD

Ellen Malmgard moves freely between sculpture, photography and installation. Born in 1978 of English/Swedish nationality, her youth was spent in the contrasting environments of London's urban landscape and the islands off the west coast of Sweden. Presently Ellen resides in Malmoe, commuting regularly to Smaland for her glasswork.



Exhibitions Sweden

Galleri Våga Se, Stockholm 2011
Bergdala Konstgalleri, Bergdala 2011
Smalands Museum 2010 - 2011
Sjobero Konsthall 2010
Karlshamns Konsthall 2010
Eksjo Museum 2010
Vetlanda Museum 2010
Bergdala Konstgalleri, Bergdala - 2009
Hylteberga Galleri, Skurup - 2009
Mockelsnas Herrgard, Almhult - 2009
Vaxjo Konsthall, Vaxjo - 2008
Gallerinatten, Malmo - 2007
Kristallsalen, Marstrand - 2007

mail@ellenmalmgard.com
+46 (0) 703735264